

Parkheath

Sold on Service

Belsize Grove NW3

£2,750 PCM (£635 per week) - Camden Band G



Spacious 2 double bedroom apartment

Large reception with wood floors

Fitted wardrobes to bedrooms

Belsize Park underground is moments away

Ground floor of period conversion

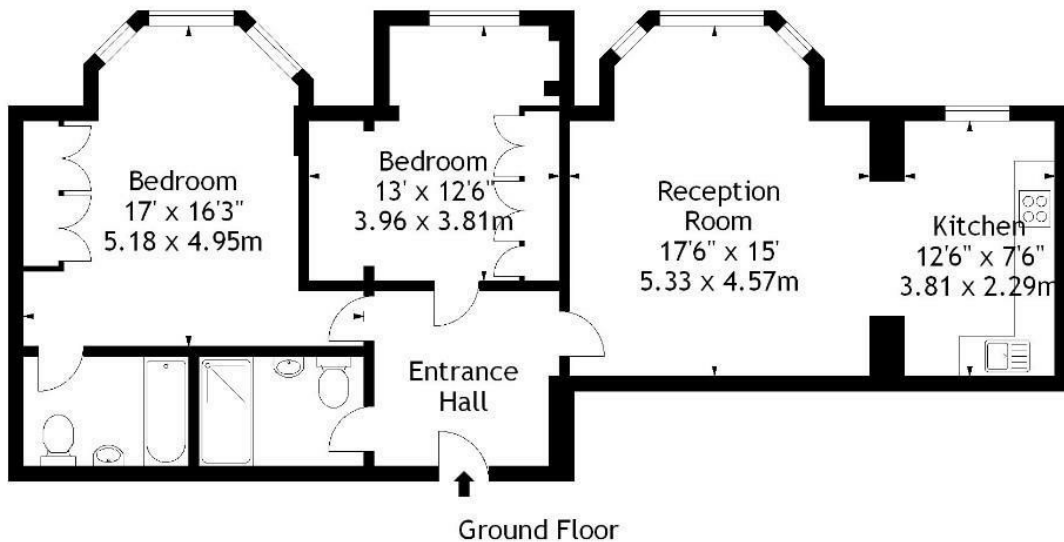
Semi-open plan kitchen with all appliances

2 bathrooms (1 en suite)

EPC: Rating D, Council Tax: Camden band G

Belsize Park Office 020 7431 3104

Belsize Grove, NW3
Approx. Gross Internal Area
898 Sq Ft - 83.42 Sq M



Measured in accordance with RICS guidelines. Every attempt is made to ensure accuracy, however all measurements are approximate. This floor plan is for illustrative purposes only and is not to scale.
© Datagraphy Ltd 2014
Photographs * Floorplans * Virtual Tours
Tel: 0845 643 4401 www.datagraphy.com

The particulars do not constitute part of an offer or contract. The particulars, including text, photographs and plans, are for the guidance only of prospective purchasers/tenants and must not be relied upon as statements of fact. The descriptions provided therein represent the opinion of the author and whilst given in good faith should not be construed as statements of fact. Nothing in these particulars shall be deemed a statement that the property is in good condition or otherwise or that any services or facilities are in good working order. All measurements are approximate